

LED RECESSED DOWNLIGHT - COB'S



FIXED

HLR-2611 (9W)
Size : Ø85mmx91mm
Cut-Out : Ø75mm



TILTABLE

HLR-2612 (9W)
Size : Ø85mmx91mm
Cut-Out : Ø75mm



FIXED

HLR-2615 (15W)
Size : Ø115mmx116mm
Cut-Out : Ø100mm



TILTABLE

HLR-2616 (15W)
Size : Ø115mmx116mm
Cut-Out : Ø100mm



FIXED

HLR-2619 (24W)
Size : Ø140mmx147mm
Cut-Out : Ø125mm



TILTABLE

HLR-2620 (24W)
Size : Ø140mmx147mm
Cut-Out : Ø125mm



TRIMLESS - FIXED

HLR-2622 (24W)
Size : Ø124mmx147mm
Cut-Out : Ø125mm



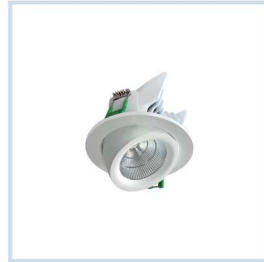
TRIMLESS - TILTABLE

HLR-2623 (24W)
Size : Ø124mmx147mm
Cut-Out : Ø125mm

LED RECESSED DOWNLIGHT - WALL WASHERS (ZOOM)



HLR-2420 - 4w
Size : Ø90mmx65mm
Cut-Out : Ø80mm



HLR-2422 - 9w
Size : Ø96mmx58mm
Cut-Out : Ø82-85mm



WITH SMALLER SIZE
HLR-2423 - 15w
Size : Ø105mmx82mm
Cut-Out : Ø90mm



WITH SMALLER SIZE
HLR-2426 - 27w
Size : Ø140mmx114.5mm
Cut-Out : 125mm



HLR-2424 - 33w
Size : Ø158mmx130mm
Cut-Out : Ø145mm



HLR-2425 - 40w
Size : Ø188mmx159mm
Cut-Out : Ø170mm



HLR-2430 - 35w
Size : 235x145x116mm
Cut-Out : 220x130mm



LH
HLR-2428 - 15w
Size : 100x100x67mm
Cut-Out : 85x85mm

SMD LED WITH BRIGHT REFLECTOR & WOVEN GLASS



LH
HLR-2429 - 30w
Size : 145x145x110mm
Cut-Out : 138x138mm

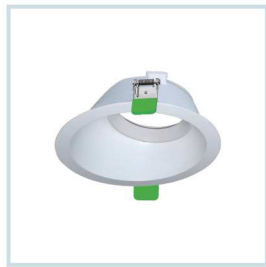


HLR-2433 - 10w
Size : Ø75mmx100mm
Cut-Out : Ø80mm



HLR-2434 - 15w
Size : Ø84mmx106mm
Cut-Out : Ø89mm

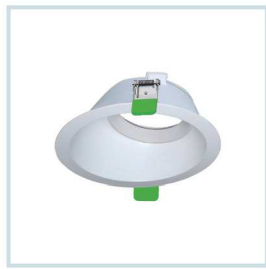
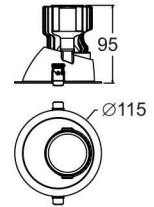
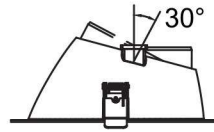
LED RECESSED DOWNLIGHT - COB'S



F02



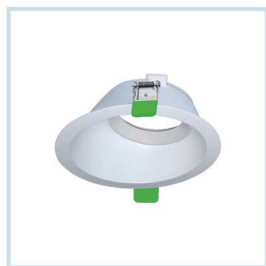
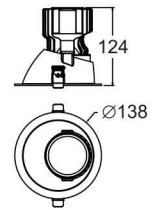
HLM-2115 (15W)



F12



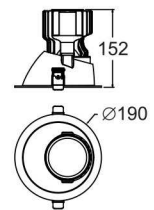
HLM-2125 (25W)



F22



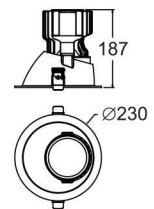
HLM-2133 (33W)



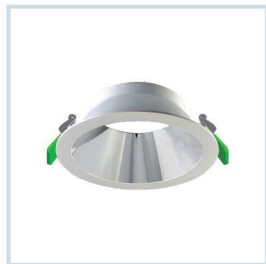
F32



HLM-2140 (40W)



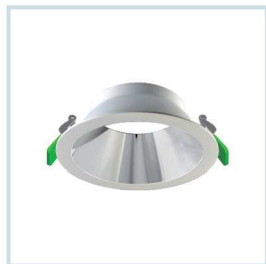
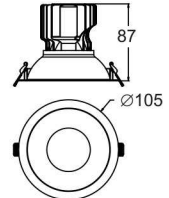
LED RECESSED DOWNLIGHT - COB'S



F01



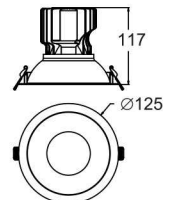
HLM-2115 (15W)



F11



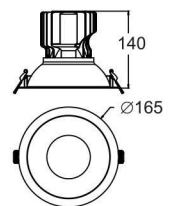
HLM-2125 (25W)



F21



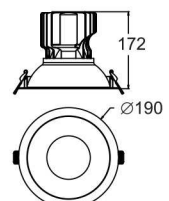
HLM-2133 (33W)



F31



HLM-2140 (40W)



LED RECESSED DOWNLIGHT - COB'S



HLR-2515 (11W / 15W)
Size : Ø110mmx75mm
Cut-Out : Ø100mm



HLR-2541 (12W)
Size : 85x85x105mm
Cut-Out : Ø75mm

COMING SOON



NEW

HLR-2543 (9W)
Size : Ø75mmx81mm
Cut-Out : Ø65mm



HLR-2544 (15W)
Size : Ø90x110mm
Cut-Out : Ø80mm



HLR-2545 (25W)
Size : Ø110x136mm
Cut-Out : Ø100mm



HLR-2549 (12W)
Size : Ø88mmx89mm
Cut-Out : Ø65mm



HLR-2552 (15W)
Size : Ø140x53mm
Cut-Out : Ø125mm



HLR-2553 (22W)
Size : Ø162x64mm
Cut-Out : Ø145mm



HLR-2554 (30W)
Size : Ø193x75mm
Cut-Out : Ø165mm



HLR-2555 (40W)
Size : Ø230x88mm
Cut-Out : Ø200mm



HLR-2558 (30W)
Size : Ø170mmx145mm
Cut-Out : Ø155mm



HLR-2601 (9W)
Size : Ø87mmx113mm
Cut-Out : Ø75mm

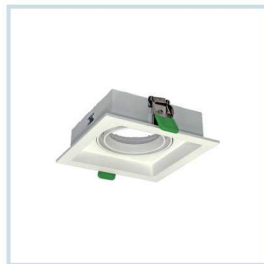


HLR-2602 (9W)
Size : Ø87mmx113mm
Cut-Out : Ø75mm



HLR-2603 (9W)
Size : Ø87mmx113mm
Cut-Out : Ø75mm

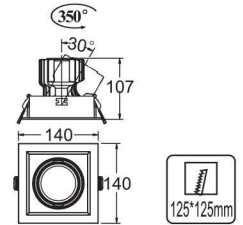
LED RECESSED DOWNLIGHT - COB'S



F17



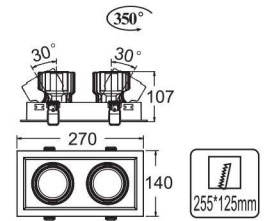
HLM-2125 (25W)



F18



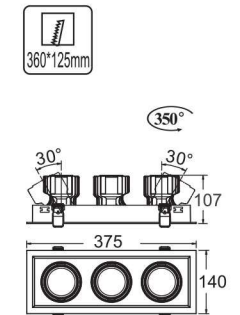
HLM-2125 (25W)



F19



HLM-2125 (25W)



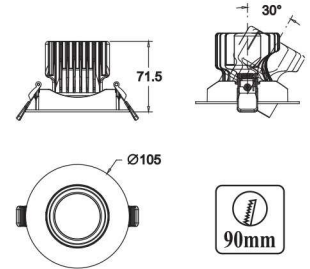
LED RECESSED DOWNLIGHT - COB'S



F03



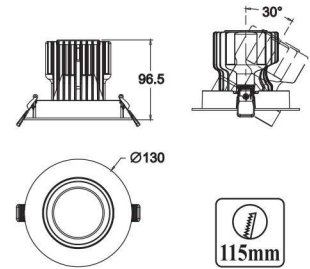
HLM-2115 (15W)



F13



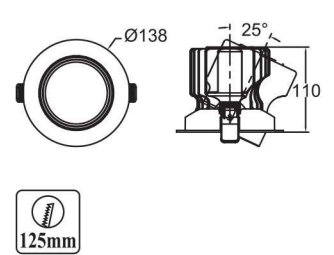
HLM-2125 (25W)



F23



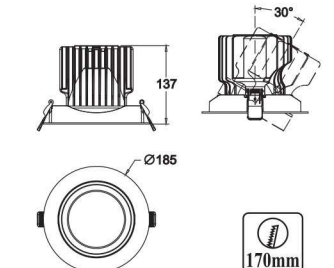
HLM-2133 (33W)



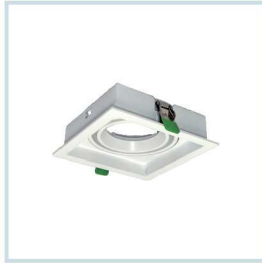
F33



HLM-2140 (40W)



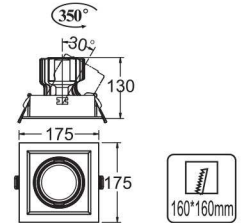
LED RECESSED DOWNLIGHT - COB'S



F27



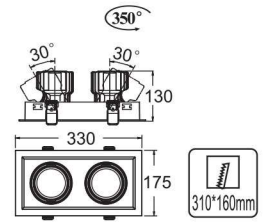
HLM-2133 (33W)



F28



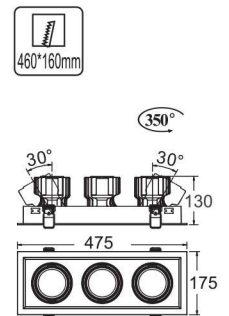
HLM-2133 (33W)



F29



HLM-2133 (33W)



LED RECESSED DOWNLIGHT - COB'S

Housing and heatsink inseparable



HLR-2481 (10W)
Size : Ø62mmx62mm
Cut-Out : Ø53mm



HLR-2482 (9W)
Size : Ø70mmx60.6mm
Cut-Out : Ø60mm



HLR-2485 (10W)
Size : Ø88mmx64mm
Cut-Out : Ø75-80mm



HLR-2486 (10W)
Size : Ø88mmx85mm
Cut-Out : Ø75-80mm



HLR-2488 (15W)
Size : Ø88mmx98mm
Cut-Out : Ø75-80mm



HLR-2491 (8W)
Size : Ø70mmx63mm
Cut-Out : Ø60mm



HLR-2492 (9W)
Size : Ø80mmx80mm
Cut-Out : Ø70mm



HLR-2493 (9W)
Size : 80x80mmx80mm
Cut-Out : Ø70mm



HLR-2495 (9W)
Size : Ø82mmx72mm
Cut-Out : Ø70mm



HLR-2496 (9W)
Size : 82x82mmx72mm
Cut-Out : Ø70mm



HLR-2497 (15W)
Size : Ø105mmx95mm
Cut-Out : Ø90mm



HLR-2498 (15W)
Size : 105x105mmx95mm
Cut-Out : Ø90mm



HLR-2511 (9W)
Size : Ø88mmx74.5mm
Cut-Out : Ø75mm



HLR-2512 (9W)
Size : Ø88mmx79mm
Cut-Out : Ø75mm



HLR-2513 (9W)
Size : Ø88mmx83mm
Cut-Out : Ø75mm



HLR-2514 (15W)
Size : Ø88mmx118mm
Cut-Out : Ø75mm